



ZHEJIANG WANLIYANG CO.,LTD. HEADQUQRTER  
浙江万里扬股份有限公司 总部

浙江省杭州市西湖区云栖小镇六和金座5号楼  
5th Building,Liuhe Cloud Mansion,Cloud Town,Xihu District,Hangzhou City,  
Zhejiang Province,China

PASSENGER VEHICLE  
TRANSMISSION DIVISION  
乘用车变速器事业部

中国安徽省芜湖市  
经济技术开发区凤鸣湖路11号  
NO.11 Fengminhu Road, Wuhu City,  
Anhui Province, China

+86 553 7535188  
wlymarketing@wanliyang.net

COMMERCIAL VEHICLE  
TRANSMISSION DIVISION  
商用车变速器事业部

中国浙江省金华市  
婺城区宾虹西路3999号  
No.3999 West Binhong Road,Jinhua City,  
Zhejiang Province,China

+86 579 82216779  
xsgs@zjwly.com

NEW ENERGY  
DIVISION  
新能源事业部

中国浙江省金华市  
婺城区金龙路666号  
No.666 Jinlong Road,Jinhua City,  
Zhejiang Province,China

+86 579 82216728  
rhl@zjwly.com

AUTOMOBILE INTERIOR TRIMS  
DIVISION  
汽车内饰件事业部

中国辽宁省辽阳市  
太子河区振兴路158号  
No.158 Zhenxing Road,Liaoyang City,  
Liaoning Province,China

+86 419 3305196  
lyjxqc@126.com

微信公众号  
Wechat ID



官方网站  
Official website

www.zjwly.com



股票代码 002434



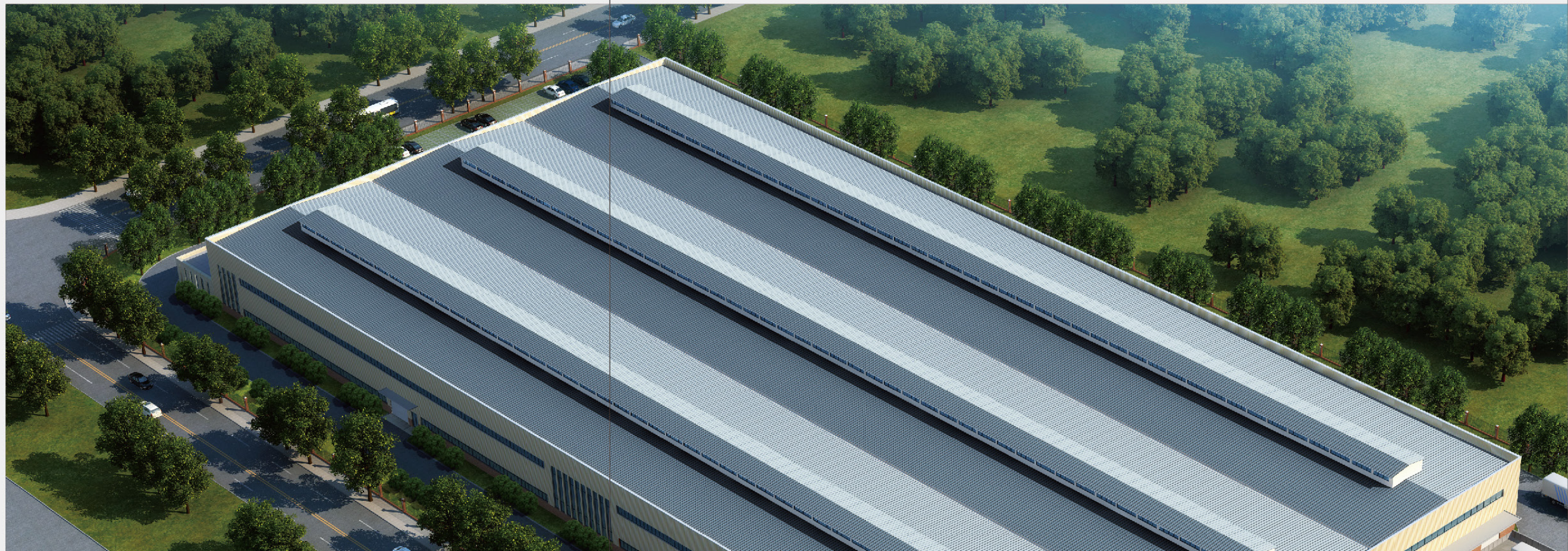
成就客户造车梦想

Fulfill Customers' Dream To Build Vehicles

贡献中国品牌力量

Make Contribution To China's Brands





## COMPANY PROFILE

### 公司概况

浙江万里扬股份有限公司是中国汽车变速器行业第一家上市公司（股票代码：002434），是国家高新技术企业，拥有国家认定的企业技术中心，产品覆盖乘用车变速器、商用车变速器、新能源驱动系统以及汽车内饰件等汽车零部件，已形成以浙江为中心，安徽、江西、河北、辽宁、山东为基地的集团化企业。公司拥有 10 余家全资或控股子公司，员工 6000 多名，总资产近 100 亿元人民币，相关产品的产销量、市场占有率居行业前列。

Zhejiang Wanliyang Co., Ltd. is the first listed company in China's automobile transmission industry (stock code: SZ002434). It is one of China's national high-tech companies and has a national level enterprise technology center. Its products include transmissions for commercial and passenger vehicles, new energy driving systems as well as automobile interior trims. With Zhejiang as the center, it has become a group company, having bases in Anhui, Jiangxi, Hebei, Liaoning and Shandong provinces. It now possesses more than ten wholly-owned or holding companies and has more than 6,000 staff with total assets of nearly 10 billion Yuan (\$1.5 billion). Its production, sales and market share are in the forefront of the industry.

- 全国文明单位
- 国家高新技术企业
- 中国汽车零部件百强企业
- 中国汽车变速器行业龙头企业

National Civilized Unit  
National High-Tech Enterprise  
Top 100 Auto Parts Enterprise In China  
Leading Enterprise in China's Auto Parts Transmission Industry





# COMPANY CULTURE

## 企业文化



### 使命/Mission

成就客户造车梦想  
贡献中国品牌力量

Fulfill customers' dream of building excellent vehicles  
Make contribution to China's brands

### 愿景/Vision

全球一流的汽车零部件供应商  
员工满意的人生事业大平台

World leading auto parts supplier  
Satisfactory platform for employees

### 核心价值观/Core value

以客户为中心  
争做奋斗者

Customer-oriented  
Being a striver

### 企业精神/Spirit

拼搏进取  
精益求精

Endeavour to be the best





# INDUSTRIAL LAYOUT

产业布局



乘用车变速器事业部  
Passenger Vehicle Transmission Division



安徽 - 芜湖



浙江 - 宁波



商用车变速器事业部  
Commercial Vehicle Transmission Division



浙江 - 金华



山东 - 平邑



新能源事业部  
New Energy Division



浙江 - 金华



汽车内饰件事业部  
Automobile Interior Trims Division



辽宁 - 辽阳·大连



江西 - 景德镇·上饶



河北 - 涿州



安徽 - 芜湖





1996

## Milestones

### 发展历程

1996

金华市清华实业有限公司成立（公司前身）

Established Qinghua Industrial Co., Ltd.  
(former WLY)

1999

开始研发制造汽车变速器

Began to develop and manufacture automobile transmission

2003

浙江万里扬变速器有限公司成立

Established limited liability company Zhejiang Wanliyang Transmission Co., Ltd.



2008

浙江万里扬变速器股份有限公司成立

Established joint stock limited liability company Zhejiang Wanliyang Transmission Co., Ltd.

收购山东临沂临工汽车桥箱有限公司

Acquired Shandong Linyi Lingong Auto Axle and Box Co., Ltd.

2017

2015

收购吉利汽车 MT 业务

Acquired Geely manual transmission business

收购金兴汽车内饰股份有限公司

Acquired Jinxing Automobile Interior Trims Co., Ltd.



2017

新的长征：向全球一流的汽车零部件企业迈进

New long march: Being a world-class auto parts company

2010

在深圳证券交易所成功上市

Listed in Shenzhen Stock Exchange



2016

更名为浙江万里扬股份有限公司

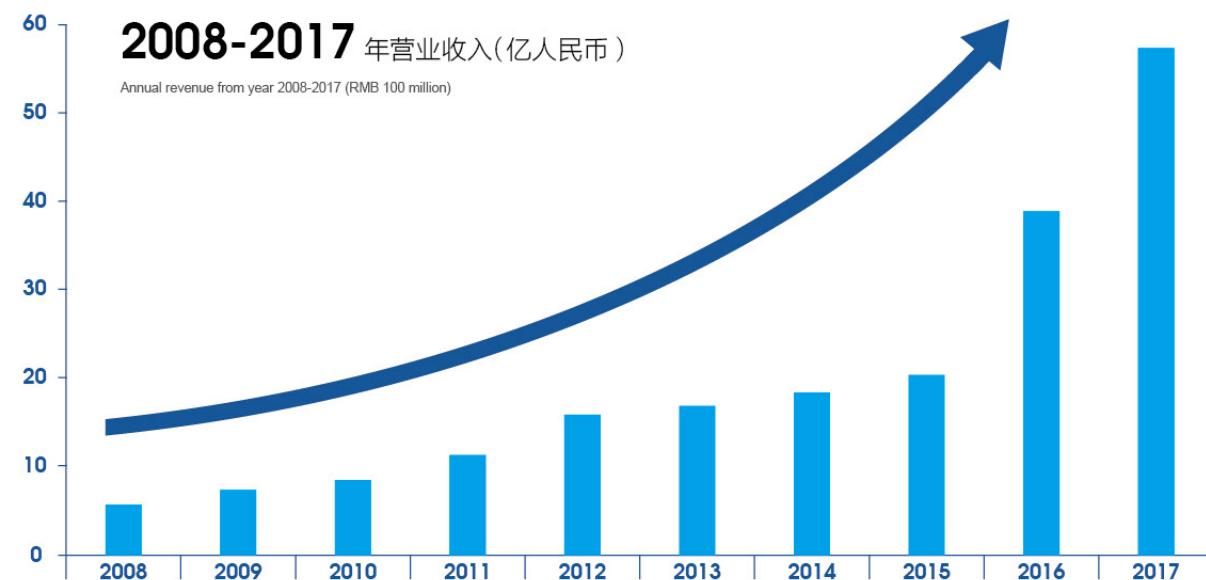
Changed company name to Zhejiang Wanliyang Co., Ltd.

收购芜湖奇瑞变速箱有限公司

Acquired Wuhu Chery Gearbox Co., Ltd.







## STRENGTH DATA

### 公司实力数据

中国汽车零部件企业百强榜第 **41** 位  
Rank Of Top 100 Auto Parts Enterprises In China: 41

营业收入 **50+** 亿元  
Operating Income: ¥ 5+ billion

员工数量 **6000+**  
Employees: 6000+

制造基地数量 **11**  
Manufacturing Bases: 11

授权专利 **260+**  
Authorized Patents: 260+

## MAJOR PRODUCTS

### 主要产品

#### 乘用车变速器

Passenger Vehicle Transmission



CVT18



CVT25



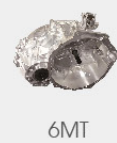
6AT



8AT (在研)



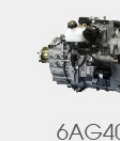
5MT



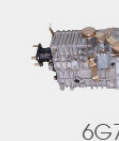
6MT

#### 商用车变速器

Commercial Vehicle Transmission



6AG40



6G70



6TS55



653H



9S150



5G13

#### 新能源驱动系统

New Energy Driving System



CVT19 PHEV



CVT38 PHEV  
(在研)



6AT PHEV  
(在研)



驱动电机  
Drive motor



电机控制器  
MCU



减速器  
Reducer

#### 汽车内饰件

Automobile interior trims



仪表板  
Dashboard



方向盘  
Steering wheel



门板  
Door panel



保险杠  
Bumper



内饰附件  
Interior accessories



# MAJOR HONORS

## 主要荣誉



Nationally Identified Enterprise  
Technology Center



National High-Tech  
Enterprise



China's Top 10 Transmissions  
Award



National Civilized  
Unit



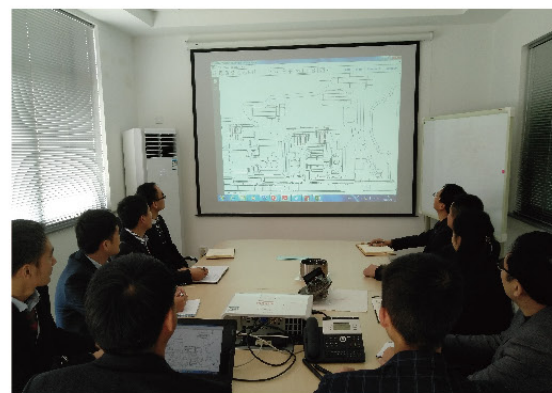
National Intellectual Property Rights  
Enterprise



National Workers  
Pioneer



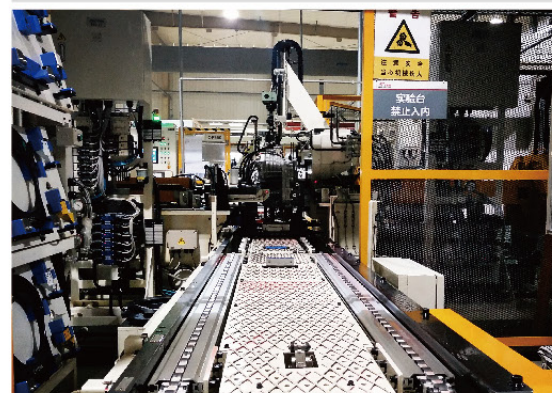




研发团队 R&amp;D Team



换挡分析测试 GSA



变速器台架试验 Transmission Bench Test



气囊静态爆破试验 Airbag Static Blasting Test

## TECHNICAL & RESEARCH SUPPORT

### 技术研发实力

专家、技术人员：750+

拥有国家认定企业技术中心、CNAS 认可汽车变速器和汽车内饰件实验室

与德国 Vector 达成战略合作关系，提升研发实力

与德国 ATESTEO 有限公司合资成立吉孚汽车技术（浙江）有限公司，致力于提升中国汽车传动系统和汽车电子的技术水平  
承担 10 多项国家重点新产品开发和省级重大科技攻关项目

Experts, technical engineers: 750+

Nationally identified enterprise technology center, CNAS approved laboratory for vehicle transmission and interior trims testing

Established strategic cooperation relationships with German Vector company to enhance research ability

Set up joint venture GF Auto Technology (Zhejiang) Co., Ltd. with German ATESTEO to improve technology of automobile transmission system and electronics

Undertake development of more than 10 national key new products and provincial scientific research projects

## INTERNATIONAL COOPERATION

### 国际合作



## COLLEGE COOPERATION

### 院校合作





## DIVISION INTRODUCTION

### 事业部简介



#### 乘用车变速器事业部

Passenger Vehicle Transmission Division

乘用车变速器事业部已形成预研一代、开发一代、生产一代的产品体系。所有产品完全拥有独立的知识产权，拥有授权专利 78 项，其中发明专利 51 项。完全具备乘用车 MT、CVT、AT 变速器的产品设计、软件开发及标定能力，产品关键技术指标处于中国领先水平。已形成年产 180 万台乘用车变速器的制造能力。其中，CVT19 无级变速器荣获“中国汽车工业科学技术一等奖”，被评为“中国十佳变速器”。

Passenger vehicle transmission division has obtained 78 authorized patents by now, of which 51 are inventive patents. All the products have independent intellectual property rights. It has the ability of design and development of transmission, software development and transmission calibration. Key technology indicators of its products are advanced in China. Its annual production capacity has reached 1.8 million units of passenger vehicle transmissions. Its mass production transmission CVT19 won the first prize of China Automotive Industry Awards for Science & Technology and China's Top Ten Transmission Award.

78

授权专利

51

发明专利

1800000

变速器生产能力



#### 商用车变速器事业部

Commercial Vehicle Transmission Division

商用车变速器事业部设立流动博士后科研工作站，所有产品拥有完全自主知识产权，拥有授权专利 180 余项，其中发明专利 11 项，承担省重大科技攻关项目 4 项，完全具备商用车 MT、AMT 的产品设计、软件开发及试验和标定能力，关键技术指标处于中国领先水平。产品覆盖微型车、轻型车、中型车、重型车等全系列商用车变速器，产品应用于包括物流运输、工程自卸、客车、市政专用车、校车、皮卡等整个广义商用车市场。已形成年产 100 万台商用车变速器的制造能力。其中，WLY9S150、WLY6G120 高端变速器荣获“浙江省科学技术二等奖”。

Commercial vehicle transmission division has established a postdoctoral workstation and possessed more than 180 authorized patents, of which 11 are inventive patents. All its products have independent intellectual property rights. It has undertaken 4 key scientific and technological projects of provincial level and has the ability of design and development of MT & AMT transmission for commercial vehicle, software development, testing and calibration. Its products can be applied to mini, light, medium and heavy-duty commercial vehicles in the board sense including transportation vehicles, dumpers, buses, municipal vehicles, school buses, pickups and etc. Its annual production capacity has reached 1 million units. The high-end products WLY9S150 and WLY6G120 both won the second prizes of Zhejiang Science and Technology Awards.

180

授权专利

11

发明专利

1000000

变速器生产能力



## DIVISION INTRODUCTION

### 事业部简介



#### 新能源事业部

New Energy Division

新能源事业部成立于 2016 年 12 月，下设吉孚汽车技术（浙江）有限公司和浙江吉孚汽车传动系统有限公司。事业部引进德国先进技术和装备，研发、生产、销售基于 AT/CVT 的 PHEV 节能型产品；并开发具有国际领先水平的新能源汽车驱动电机、电控及“三合一”系列驱动总成等新能源汽车专用产品。事业部具备相关产品的设计、标定等关键能力。产品覆盖商用车、乘用车和专用车等汽车领域，预计 2019 年可形成 50 万台套节能汽车传动系统和 30 万台套新能源汽车驱动系统的综合能力。

The new energy division was set up in December, 2016. It includes two companies, GF Automobile Technology (Zhejiang) Co., Ltd. and Zhejiang GF Auto Drivetrain Co., Ltd. By introducing advanced technology and equipment from Germany, it focuses on development, production and sales of energy-efficient PHEV products based on AT and CVT. It also develops driving motor, motor control unit (MCU), and three-in-one driving assembly for new energy automobile and possesses the key ability of product design and calibration. Its products are applied to commercial automobile, passenger automobile and special automobile. It is estimated that by the year of 2019, its annual production of drivetrain for energy-saving automobile can reach 500,000 units and for new energy automobile 300,000 units.

500000  
传动系统

300000  
驱动系统



#### 汽车内饰件事业部

Automobile Interior Trims Division

汽车内饰件事业部具备造型设计能力、产品设计能力、CAE 分析能力、工艺工程开发能力以及内饰全过程验证能力，拥有授权专利 13 项，其中发明专利 5 项。产品覆盖仪表板、门板、方向盘、保险杠和内饰附件等全系列汽车内饰件。拥有全球领先的检测设备和试验设备，能满足不同车型个性化开发的需求，已形成年产 200 万台套内饰件的综合能力。

Automobile interior trims division has the ability of modeling design, product design, CAE analysis, process engineering development and the whole process verification of interior trims. It has obtained 13 patents, of which 5 are inventive patents. Its products include dashboard, door panel, steering wheel, bumper and interior accessories. Its testing center has the world's leading detection equipment and its annual production capacity has reached 2 million set units.

13  
授权专利

5  
发明专利

2000000  
内饰生产能力





## SYSTEM CERTIFICATION

### 体系认证



通过 IATF16949  
质量管理体系认证

IATF16949  
Quality management  
system certification



通过 ISO14001:2015  
环境管理体系认证

ISO14001:2015  
Environmental management  
system certification



通过 CNAS 认定的汽车变速器性能试验中心  
和汽车内饰件检测中心

CNAS certified testing center for automobile  
transmission performance  
and interior trims

## SERVICE PRINCIPLE

### 服务理念



快速

Quick response



专业

Profession



用心

Devotion





## MAIN CUSTOMERS SHOW

主要客户展示

### 汽车传动及驱动系统主要客户

Main customers of automobile transmission and drive system



### 汽车内饰件主要客户

Main customers of automobile interior trims





# GLOBAL CUSTOMERS DISTRIBUTION

全球用户分布

- 公司产品配套的主机厂  
Automobile companies using WLY gearboxes
- 📍 公司产品搭载整车销售的区域  
Sales areas of vehicles with WLY gearboxes