



**AUTOMOTIVE INTERIOR
TRIMS DIVISION**

汽车内饰件事业部

📍 **事业部本部 · 辽阳基地** Division Headquarter · Liaoyang Base

中国辽宁省辽阳市太子河区振兴路158号

Address: No. 158 Zhenxing Road Liaoyang City,
Liaoning Province China

Tel.: +86 419 3305196

E-mail: lyjqc@126.com

📍 **芜湖基地** Wuhu Base

中国安徽省芜湖市经济技术开发区淮海路9号

Address: No.9 Huaihai Road, Economic and Technological
development District, Wuhu city, Anhui Province, China

📍 **涿州基地** Zhuozhou Base

中国河北省涿州市经济开发区阳光大街28号

Address: No. 28 Yangguang Avenue, Economic Development District,
Zhuozhou City, Hebei Province, China

📍 **大连基地** Dalian Base

中国大连市保税区瑞港路6号

Address: No. 6 Ruigang Road, Bonded District, Dalian City, China

📍 **景德镇基地** Jingdezhen Base

中国江西省景德镇市昌江区高新区嘉和路2号

Address: No.2, Jiahe Road, Changjiang District, Jingdezhen City,
Jiangxi Province, China

📍 **上饶基地** Shangrao Base

中国江西省上饶市经济开发区汽车零部件产业基地12号

Address: No.12 Automobile Parts Industry Base, Economic
Development District, Shangrao City, Jiangxi Province, China

关注官方微信公众号
Wechat ID



官方网站
Official website

www.zjwly.com



**WLY · AUTOMOBILE
INTERIOR
TRIMS**

万里扬 · 汽车内饰件



成就客户造车梦想

Fulfill Customers' Dream To Build Vehicles

贡献中国品牌力量

Make Contribution To China's Brands

INTRODUCTION OF IWLY AUTOMOBILE INTERIOR TRIMS DIVISION

汽车内饰件事业部简介

汽车内饰件事业部是浙江万里扬股份有限公司的新兴业务单元。拥有辽宁辽阳和大连、河北涿州、安徽芜湖、江西景德镇和上饶等六大基地。现有员工 1500 多人，产品覆盖汽车主副仪表板、方向盘、门板、内饰附件和保险杠等全系列汽车内饰件，主要为华晨宝马、北京奔驰、华晨雷诺、奇瑞汽车、汉腾汽车、长安汽车、北京摩比斯、北京汽车、一汽吉林和华晨汽车等主流汽车厂提供配套服务，已形成年产 200 万台套汽车内饰件的综合能力。

事业部拥有省级重点企业研究院，拥有专业技术人才 110 余人，授权专利 87 项，其中发明专利 5 项。具备 A 面设计能力、产品设计能力、CAE 分析能力、工艺工程开发能力，以及全过程试验验证能力。通过了 IATF16949 质量管理，ISO/TS14001 国际环境，OHSAS/18001 国际职业安全，CCC 国家强制产品等体系的认证，并通过了德国汽车工业协会的 VDA 认证。事业部检测中心拥有 3D 打印机、气囊静态爆破机等先进装备，并通过了 CNAS 认定，为新品研发和产品试验提供良好保证。事业部研究院致力于与客户建立紧密的战略合作关系，实施产品同步规划、同步研发，为客户提供不同车型的个性化开发服务。坚持以国际领先水平为导向，努力把事业部打造成具有国际一流竞争力的汽车零部件供应商。

汽车内饰件事业部 Auto Interior Trims Division



辽宁 - 辽阳 · 大连



河北 - 涿州



江西 - 景德镇 · 上饶



安徽 - 芜湖

Automobile Interior Trims Division is an emerging business unit of Zhejiang Wanliyang Co., Ltd., including Liaoyang, Dalian, Zhuozhou, Wuhu, Jingdezhen and Shangrao bases. It has more than 1,500 employees and its products cover automobile main and deputy dashboard, steering wheel, door panel, interior accessories, bumper and other interior trims. Its main customers are BMW Brilliance, Beijing Benz, Renault Brilliance, Chery, Hanteng, Changan, Mobis, Beijing Auto, FAW Jilin, Brilliance and other mainstream automobile companies with annual production capacity of 2 million sets.

The division has a provincial key enterprise research institute with more than 110 professional and technical personnel and 87 authorized patents, including 5 invention patents. It is capable of carrying out A face design, product design, CAE analysis, process engineering development, and whole process test and verification. It has obtained IATF16949 quality management certification, ISO/TS14001 international environment certification, OHSAS/18001 international occupational safety certification, CCC national compulsory product certification and passed the VDA certification of German Automobile Industry Association. The testing center of the division has advanced equipment such as 3D printer, airbag static blasting machine, and has passed CNAS certification, providing all necessary guarantee for new product development and product testing. Its research institute is committed to establishing close strategic cooperation with customers through implementing synchronous product planning and development and providing personalized development to customers with different models.

MAIN PRODUCTS

主要产品系列

- 01 仪表板 Dashboard
- 02 副仪表板 Deputy Dashboard
- 03 门里板 Door panel
- 04 立柱板 Column plate
- 05 方向盘 steering wheel



TECHNICAL&RESEARCH SUPPORT 技术研发实力

- 省级研发中心 Provincial R&D Center
- 专业研发技术人才 Professional R&D Technical Personnel : 100⁺
- 国家专利 National Patents : 96
- 体系认证 System certification: IATF16949 / OHSAS18001 / ISO14001
- 德国汽车工业协会认证 VDA Certification

TECHNICAL&RESEARCH SUPPORT

技术能力

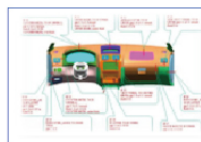
我们能做什么:

① A面设计能力 A surface design:

- ◆ 效果图设计 Design ability of effect diagram
- ◆ 油泥模型制作 The ability of making clay model
- ◆ 激光扫面和点云处理 Laser scanning and point cloud processing
- ◆ CAS面的铺设和A面光顺 The laying of CAS surface and the ability of A surface smoothing

② 产品设计能力 Products design:

- ◆ A面可行性分析及绘制断面
A surface analysis and cross section drawing
- ◆ 总布置及人机要求、法规的分析
Analysis of lay-out and requirement of human recourse and machine and regulation
- ◆ DTS定义及匹配定位系统分析
DTS definition and Matching positioning system analysis
- ◆ 3D建模
3D data
- ◆ GD&T图纸
GD&T drawing



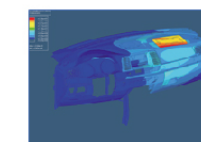
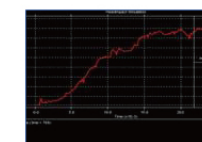
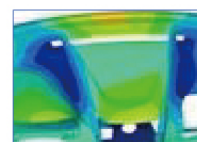
实验室 Laboratory

通过CNAS认证

China National Accreditation Service for Conformity Assessment (CNAS) Certification.

③ CAE分析能力 CAE analysis ability:

- ◆ 汽车座舱人机分析 Car cockpit human-machine analysis
- ◆ NVH、刚度、硬度分析 NVH, stiffness, strength analysis
- ◆ 头碰、侧碰、膝碰分析 Head collision, side collision, knee collision analysis
- ◆ 热变形 CFD Thermal deformation, CFD



④ 全过程试验验证能力 Test validation of the whole process:

- ◆ 耐度试验 Resistance test
- ◆ 机械试验 Mechanical test
- ◆ 化学试验 Chemical test
- ◆ 气囊爆破试验 Airbag static blasting

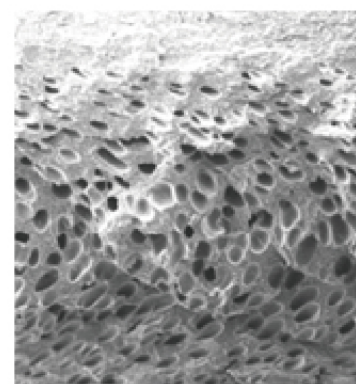
MANUFACTURING PROCESS

制造工艺

仪表盘系列 IP series

表皮：搪塑、IMG、阳模；
复合：真空、包覆、发泡；
注塑：EIPP、双色；
弱化和切割：激光、冷刀、水刀、热刀、冲切；
焊接：摩擦、超声波、热板、热风、高频。

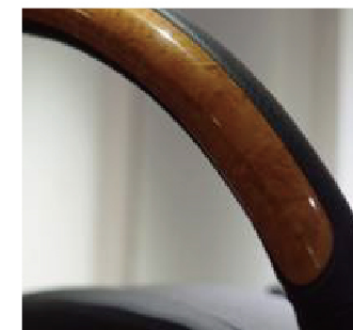
Slush mold, IMG, male die;
Vacuum, cladding, foaming;
EIPP/2K injection technique;
Laser, cold/hot knives, water jet cutter, punching scoring and cutting process;
Vibration/ultrasonic wave/hot plate/hot air/high-frequency welding process.



方向盘系列 Steering wheel series

PU自结皮发泡、真皮包覆、水转印；

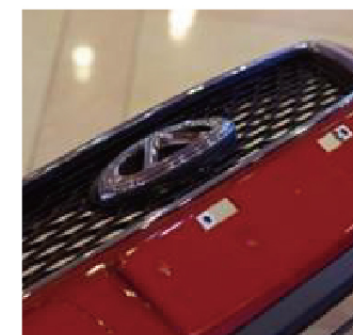
PU self-skinning foaming, leather shrouding, water transfer printing application.



保险杠系列 Bumper series

注塑、涂装、电镀、焊接。

Injection, painting, electroplating, welding.



汽车门板 DP series

真皮的软质触感：IMG、阳模吸覆、塘塑发泡；

轻量化：EIPP；

多样化表面处理：INS、IMD、水转印；

IMG, male die adhesion and slush foam formation;

EIPP;

Surface treatment integrated with integrated with INS, IMD and water transfer printing.



附件系列 Interior accessory series

双色注塑、包覆；

2K injection and normal injection employment, wrapping process;



EQUIPMENT SHOW

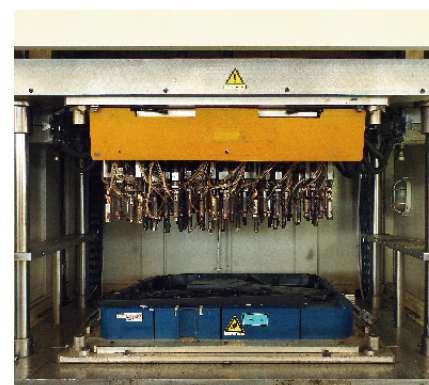
装备展示



3D打印机
3D Printer



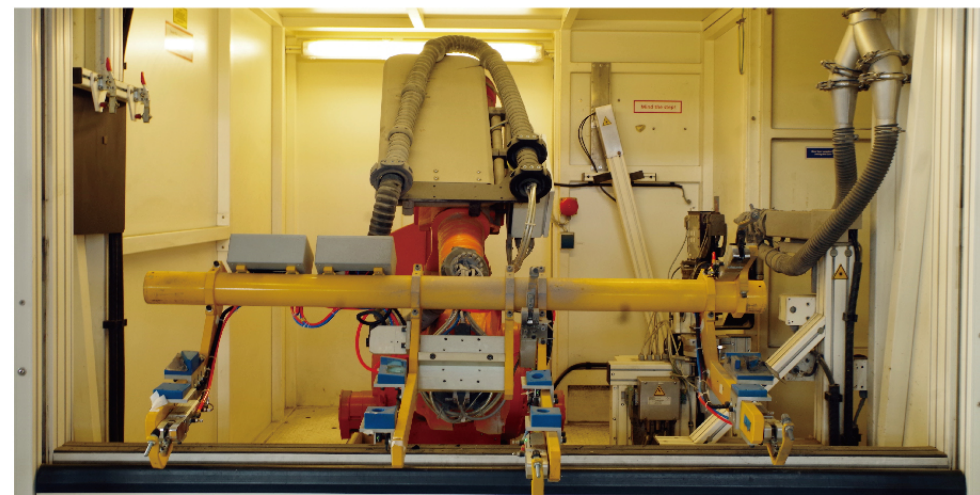
气囊静态爆破机
Airbag Static Blasting Machine



热熔焊接机
Hot-Melt Welding Machine



气囊撕裂线曲面冷刀弱化机
Airbag Tear Line Curved Knife Weakening Cold Machine



副驾驶气囊撕裂线激光弱化机
The Co-pilot Airbag Weakening Tear Line Laser Machine

CUSTOMER SHOW

主要客户展示



MOBIS



Brilliance Auto
华晨汽车

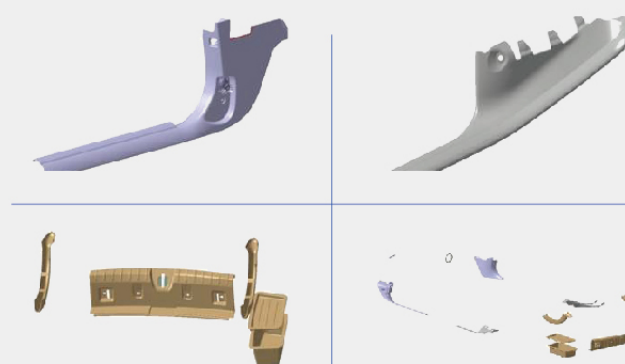
华晨宝马 · 3系

BMW3 series



MASS PRODUCTION

量产项目



侧围系列 Side surround Series

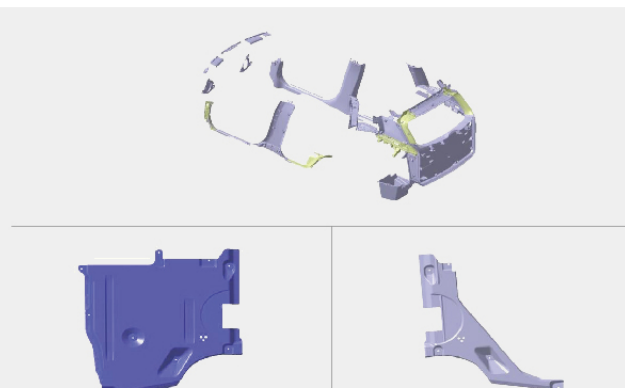
华晨宝马 · X3系

BMW X3 series



UNDER DEVELOPMENT

在研项目

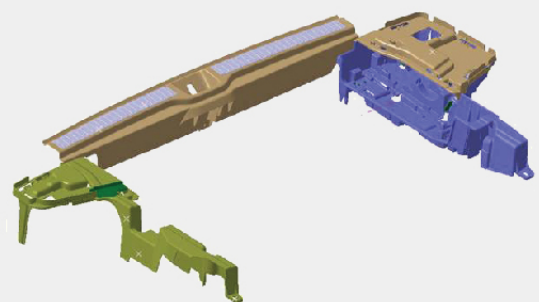


侧围系列 Side surround Series

北京奔驰 · GLC200 BENZ GLC 200



MASS
PRODUCTION
量产项目



侧围系列 Side surround Series

华晨汽车 · 华颂7 Brilliance · Huasong7



MASS
PRODUCTION
量产项目



仪表板系列 Dashboard series

奇瑞汽车 · 瑞虎5 Chery · Tiggo 5



MASS
PRODUCTION
量产项目

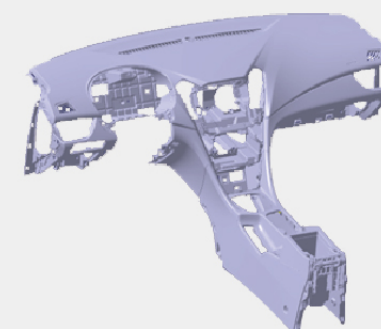


仪表板、保险杠系列 Dashboard, Bumper series

奇瑞汽车 · 艾瑞泽5&7 Chery·Arrizo5&7



MASS
PRODUCTION
量产项目



仪表板系列 Dashboard series

汉腾汽车 · 汉腾X5 Hanteng · HantengX5



MASS
PRODUCTION

量产项目



仪表板系列 Dashboard series

长安汽车 · CS75 Changan · CS75



MASS
PRODUCTION

量产项目



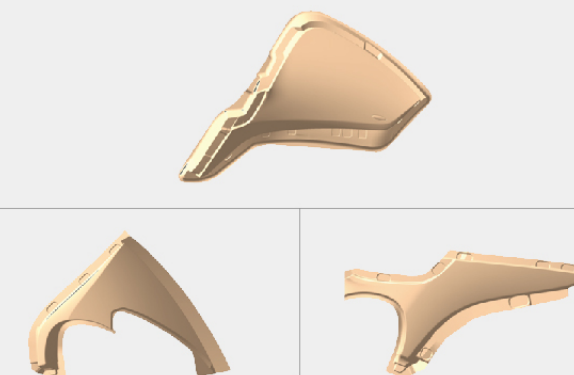
全内饰系列 All Interior Series

北京现代 · 新胜达 HYUNDAI · SantaFe



MASS
PRODUCTION

量产项目



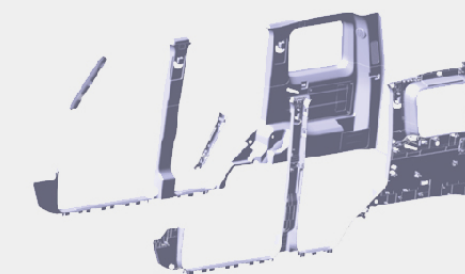
仪表板附件系列 Dashboard Annex series

北京汽车 · BJ80 BAIC · BJ80



MASS
PRODUCTION

量产项目



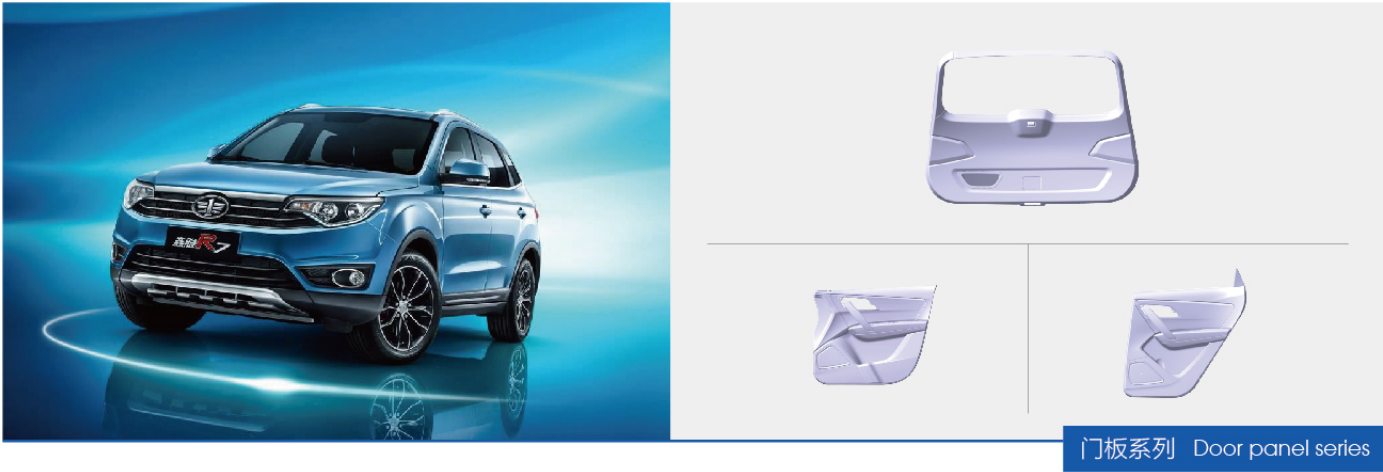
立柱侧围系列 Column side circumference series

吉轻汽车 · 森雅R7

Faw · senyaR7



MASS
PRODUCTION
量产项目



华晨汽车 · 中华V3

Brilliance · ZhonghuaV3



MASS
PRODUCTION
量产项目

